

Date | 2/5/26



Amol Tukaram Sangale.

ARCHITECS - INTERIOR DESIGNERS - LANDSCAPE
Behind shyadri College, Kesharkunj Building
Architectural and Interior consultant

Mo NO - 9975056331

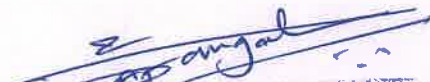
At - Sangamner Dist - Ahmednagar

Estimate of Proposed Interior Design work at Amrutvahini Bank, Dhandarfal Branch, Tal. Sangamner, Dist. Ahilyanagar

RECAPITULATION

Sr. No.	PARTICULARS	ESTIMATED AMOUNT
A	Table 2	5,54,740.00
B	Table 3	3,40,890.00
C	Table 4	4,17,803.49
D	Table 5	1,26,150.00
E	Table 6	1,04,660.00
F	Table 7	1,03,200.00
G	Table 8	2,91,000.01
	TOTAL TABLE	19,38,443.50
	ADD GST (18%)	348920
	TOTAL	22,87,364.00

IN WORDS: Twenty Two Lakh Eighty Seven Thousand Three Hundred Sixty Four Only


AMOL SANGLE
(Architectural & Interior Constl.)

Estimate of Proposed Interior Design work at Amrutvahini Bank, Dhandarfal Branch, Tal. Sangamner, Dist. Ahilyanagar
FURNITURE [A]

Sr. No.	Description	Quantity	Unit	Rate	Total
1	<p>Tables to be provided as per the Specification below: A: Main Cabin Table-</p> <p>Size: 6'0" x 2'3" x 2'6" Drawer Box: 1 no on right side Table Glass: 12mm with side polish Keyboard Drawer: 1 Cable Maneger: 1 Foot Rest: 6" x 18" ply box Drawer Box Specification:</p> <p>Width: 15" Drawer No: 3 with telescopic chanel Hande: Stainless Steel Lock: 3 Drawer 1 key Material to be Used:</p> <p>Table top: 19mm ply Vertical Members: 19mm ply Front Face: 12mm ply Drawer Box Bottom: 8mm ply Laminate: 1mm Laminate/Color as per specified by Architect) Inernal Part: 0.8mm Laminet (Color as per specified by Architect) or base white color/standard companv).</p>	2	Nos	28,000.00	56,000.00
2	<p>CASHIER COUNTER / CLERICAL COUNTER : Upper Top Width: 15" (19mm Ply with Laminate & Glass) ; Upper Top Height: 4'; Lower Top width: 2'9" (19mm ply with Laminate); Lower Top Height: 2'6" ; Every running 3' to 4' provided with 1 drawer; Lower Top with no Glass; Other Specification as per (2):</p>	24	Rft.	6,400.00	153600
3	<p>BACK & SIDE UNIT : Providing and fixing Back & Side File Storage Unit of 3' height 15" deep, 19 mm ply ,shutters, brass W-hinges ,covered with 1.50 mm laminate,handels, magnetic ball catches, all internal surfaces covered with 1.00 mm thk. laminate, lipping etc.complete as per detailed drawing & design.</p>	32.25	Sq.Ft.	1,200.00	38,700.00
4	<p>WRITING DESK:- Wall hung writing desk for customers of size 3' in width 1'.6" deep with provision for slip books to accommodate 1mm laminate as per details design covered</p>	4	Sq.Ft.	610.00	2,440.00
5	<p>FULL HEIGHT PARTITION IN PLY:[Manegers cabin, Chairman cabin, Cashier & Strong Room] Providing and fixing in position 12 mm. Thk. Ply wood Partition, • Or M.D.F.with duco paint insertion of T.W. member wherever necessary, cutting of holes to partition, provision for electrical conduits, 6 mm. Ply for skirting with 1 mm aminate covering of approved colour & shade item complete.</p>	640	Sq.Ft.	475.00	304000
				Total	5,54,740.00

**Estimate of Proposed Interior Design work at Amrutvahini Bank, Dhandarfal Branch, Tal. Sangamner, Dist. Ahilyanagar
FURNITURE [A]**

Sr. No.	Description	Quantity	Unit	Rate	Total
6	FULL HEIGHT PARTITION IN GLASS:[Manegers cabin/ Chairman cabin & Cashier Cabin] Providing and fixing in position Partition, including supporting frame work ,opening for windows and doors, 8 mm. Plain glass with etching for windows fixed in 1/2" X 1/2" T.W. Beading. Or M.D.F.with duco paint ,insertion of T.W. member wherever necessary, cutting of holes to partition, provision for electrical conduits, 6 mm. item complete.	198	Sq.Ft.	490.00	97020
7	GLASS DOOR: Providing and Fixing in position the Glass Door including Supporting frame work, with door handle, lock, hinges and other necessary fittings, fixtures and accesseories. Item complete.	63	Sq.Ft.	840.00	52,920.00
8	MAIN GLASS DOOR Providing and Fixing in position the Glass Door of toughened glass including Supporting frame work, with door handle, lock, hinges and other necessary fittings, fixtures and accesseories. Item complete.	40	Sq.Ft.	855.00	34,200.00
9	Etching to Glass	0	Sq.Ft.	60.00	0.00
10	WALL PANELLING: Providing and Fixing in position the 8mm/12mm thk panelling to wall, including 1mm thk laminet (of proved color) or MDF as specified.Item Complete.	73	Sq.Ft.	450.00	32,850.00
11	GYPSUM (GRID) CEILING : Providing and erecting on site Gypsum ceiling with necessary supporting frame work in G.I. Channels with minimum grid of 2'0" x 2'0" both way Gypsum 9 mm. thk. sheet screwed to frame work. Corner mouldings, grooves etc. as per drawing. Support system in plywood to accommodate stain glass at main bank hall and meeting hall ceiling (without extra charge.No deduction in area calculation will be made for the area of stain glass while calculating the Gypsum ceiling area). All necessary provisions for fans, sunken amps, audio speakers etc. should be made without extra charge etc. item complete.	950	Sq.Ft.	110.00	1,04,500.00
12	ROLLING SHUTTERS WITH GUARD	40	Sq.Ft.	170.00	6,800.00
13	CURTAINS- VENETIAN(ROLLER) BLINDS: Providing & fixing Roller Venetain Blinds, including Alluminium channel with rod & runner. Louvers of polyster cloth including bottom weight & chain with necessary fittings etc.complete.	90	Sq.Ft.	140.00	12,600.00
				Total	3,40,890.00

**Estimate of Proposed Interior Design work at Amrutvahini Bank, Dhandarfal Branch, Tal. Sangamner, Dist. Ahilyanagar
FURNITURE [A]**

Sr. No.	Description	Quantity	Unit	Rate	Total
14	PIN-UP BOARD: (Soft Board) Providing and fixing 12 mm thk. soft board, fixed on 12 mm thk. ply, covered with upholstery (costing approx. 150 Rs / Sq.M.) at desired places as per detailed drawing & design.	15	Sq.Ft.	250.00	3,750.00
15	Providing and applying pearl (LUSTER) finish paint in two coats of approved colour shade to existing surface including scaffolding preparing the surface to receive paint and applying acrylic wall putty etc. complete (Sample and brand is to be got approved from Executive Engineer and Prior permission of S.E. shall be obtained before inclusive of this item in the Estimate. Spec. No.: As directed by Engineer in charge.	1220	Sq.Ft.	35.00	42,700.00
16	Providing and applying Plastic Emulsion finish paint for ceiling in two coats of approved colour shade to existing surface including scaffolding preparing the surface to receive paint and applying acrylic wall putty etc. complete (Sample and brand is to be got approved from Executive Engineer and Prior permission of S.E. shall be obtained before inclusive of this item in the Estimate. As directed by Engineer in charge.	0	Sq.Ft.	10.00	0.00
17	Providing and applying OIL PAINT of approved colour and shade to old and new furniture surfaces in two coat. Complete.	0	Sq.Ft.	16.50	0.00
18	FULL HEIGHT FILING UNIT: Providing and fixing Full Height File Storage Ht.7' length 3' Unit 16" deep, 19 mm ply shutters, brass W-hinges , covered with 1.50 mm laminate, handles, magnetic ball catches, all internal surfaces covered with 1.00 mm thk. laminate, lipping etc. complete as per detailed drawing & design.	70	Sq.Ft.	1,500.00	1,05,000.00
19	CENTRE TABLE /TEA POY: Providing and supplying on site teapoy with 19 mm. Plywood frame & 1 mm. Thk. Laminate & 12mm. Thk plain glass with edges diamond polished as per detailed drawing item complete	0	Nos	2,250.00	0.00
20	CARPET FLOORING	950	Sq.Ft.	125.00	1,18,750.00
CIVIL WORK					
21	BRICK WORK	161	Cu. Ft.	237.37	38,216.57
22	PLASTER WORK	322	Sq.Ft.	54.86	17,664.92
23	TILE WORK	200	Sq.Ft.	216.61	43,322.00
24	WATER PROOF CURTAIN	96	Sq.Ft.	450.00	43,200.00
25	MAIN DOOR GRANITE FRAME	40	Sq.Ft.	130.00	5,200.00
TOTAL					4,17,803.49
SAY					4,17,803.49

**Estimate of Proposed Interior Design work at Amrutvahini Bank, Dhandarfal Branch, Tal. Sangamner, Dist. Ahilyanagar
ELECTRIFICATION [B]**

Sr. No.	Description	Quantity	Unit	Rate	Total
1	Supply & Installation of point wiring for Light / Fan / Bell concealed type with 2x1 sq.mm PVC copper wire house guard type Polycab make with appropriate coding & with Limitation to pipe size duly drawing in rigid 25 mm PVC conduct prision make with necessary accessories such as deep Junction boxes inspection boxes, bends etc. making complete piping rigid by adhesive / resin and fixed with binding wire, U nails all duly concealed in ceiling, RCC slab, beam while casting and In walls by making chases, accessories such as ceiling rose & Holders should be Leon & switches should be Iso Leon for tube point and 30840 for fan point with concealed sheet metal boxes and Gold Medal(AIR) Plate.	55	NOS	750.00	41,250.00
2	Supply & installation of 10 amp plug point on the same switch board by using Gold Medal (AIR).	25	NOS	450.00	11,250.00
3	Supply installation of indendent plug by concealed method by using PVC 1sqmm. House guard copper wire of polycab make & 25mm PVC pipe and accessories such as junahon boxes, T, and Bends of precession make with 3 pin PVC modular type socket no 21113 of Leon make along with GI concealed heet metal / box &Gold Medal (AIR) Plate.	16	NOS	950.00	15,200.00
4	Supply and installation of independent 16 amp power point by using 25 sqmm. PVC copper wire house guard of polcab make and 25 mm PVC pipe and accessories such as Junction boxes, T and bends of precision make with 16 amp socket and switch with GI concealed sheet metal boxes with Gold Medal(AIR) Plate. Note. Maximum length of the power point will be 10 itrs.	4	NOS	1,200.00	4,800.00
5	Supply and installation of modular type Electronics Deemer 400/450 watt, 2 module erected on modular plate and concealed box complete with all necessary connecions.	8	NOS	450.00	3,600.00
6	Supply & laying of Speaker Wire 1.0sq mm PVC copper PVC insulated wire of polycab make with PVC conduct	90	RMT	38.00	3,420.00
7	Ahuja Make 6" Speaker with Installation	5	NOS	1,550.00	7,750.00
8	Supply & laying of 2.2.5 sqmm &1.1.0sq mm PVC copper PVC insulated house guard wire of polycab make with 1.1 KU grade in rigid PVC conduct	180	RMT	127.00	22,860.00
9	Supply & laying only 2-4 sq.mm &1- 2.5 sqmm PVC copper PVC insulated house guard wire in rigid PVC conduct in approved manner.	90	RMT	178.00	16,020.00
				Total	1,26,150.00

**Estimate of Proposed Interior Design work at Amrutvahini Bank, Dhandarfal Branch, Tal. Sangamner, Dist.
Ahilyanagar
ELECTRIFICATION [B]**

Sr. No.	Description	Quantity	Unit	Rate	Total
10	Supply & laying only 2-6 sq.mm & 4.0sqmm PVC copper PVC insulated house guard wire in rigid PVC conduct in approved manner.	30	RMT	277.00	8,310.00
11	Supply & laying of 1-4 sq.mm PVC copper PVC Insulated wire of Polycab make and house guard type along with mains as a earth wire.	10	RMT	110.00	1,100.00
12	Supply & laying of 1-25 q.mm PVC copper PVC insulated wire of Polycab make and house guard type along with Running mains.	87	RMT	55.00	4,785.00
13	Supplying & erecting & marking initure circuit breaker confirming to IS: 8828 of 1996 single pole 6 amp to 32 amp as per the load capacity of the installation with required wiring connections and lugs etc in provided distribution box legrand make.	18	NOS	350.00	6,300.00
14	Supply erecting & marking double pole M.C.B. onfirming to 32 A withreqyire wiring connections and lugs etc in provided distibution box legrand make.	3	NOS	850.00	2,550.00
15	Supply & erecting single pole & neutral distribution board flush mounted 16 way SPN legrand make.	2	NOS	3,500.00	7,000.00
16	Supplying & Erection of LED Fancy Wall Lights	7	NOS	1,050.00	7,350.00
17	Installation of assembly on wall or ceiling on labour basis only.	7	NOS	100.00	700.00
18	Installation of 48" ceiling fan with Bajaj Bhar make connections in position; on.(1200 mm)	0	NOS	2,150.00	0.00
19	Installation of 36" ceiling fan with Bajaj Bhar connections in position; on. (900 mm)	8	NOS	1,950.00	15,600.00
20	Installation of ceiling fan with connections in position; on labour basis only.	8	NOS	250.00	2,000.00
21	Supplying & Erection of LED 15 wattPanasonic Lights	40	NOS	550.00	22,000.00
22	Installation of of LED 15 watt Lights on Labor base only	35	NOS	70.00	2,450.00
23	Supplying and installing PVC low volage grade copper conductor CAT-6 Suitable for LAN computer Net working in an approvedmanner D Link make.	345	RMT	47.00	16,215.00
24	Suplting and intatalling PVC 2 pair with 0.5 mm dia telephone cable for intercom system polycab make (Tinned copper conductor)	150	RMT	32.00	4,800.00
25	Supplying installing and testing input / output "D" link type connector box complete with RJ-45 connector and punching in an approved manner.	5	NOS	500.00	2,500.00
26	Suppling and installing RJ 11 Telephone socket single with shutter and box leon make.	4	NOS	250.00	1,000.00
				Total	1,04,660.00

Estimate of Proposed Interior Design work at Amrutvahini Bank, Dhandarfal Branch, Tal. Sangamner, Dist. Ahiyanagar
ELECTRIFICATION [B]

Sr. No.	Description	Quantity	Unit	Rate	Total
27	Supplying and erecting of an earthing job with 60x60x0.6 cms galvanised cast iron plate buried in specifically prepared earth pit so as to keep top of earth plate 1.5 mtrs. Below ground level with 40 kg charcoal and 40 kg salt each complete with necessary length of 25x3 mm GI strip and 2 mtrs GI pipe of 1"GI /Brass nut bolt.	1	NOS	5,500.00	5,500.00
28	Erection of recess type LED Profile light fitting (5 mit.)	1	NOS	1,750.00	1,750.00
29	10 Nos IP Camera 2 mp & DVR 16 CH K-2 & 4TB Hard Disk Make Hikvision with installation	1	NOS	80,000.00	80,000.00
30	3.8 EPB Make Matrix (Intercom Maschin) with installation	1	NOS	13,500.00	13,500.00
31	8 Port 100/1000 MBPS Swith For Lan Computing with installation	1	NOS	2,450.00	2,450.00
				TOTAL	1,03,200.00
				SAY	1,03,200.00



Amol Tukaram Sangale.
ARCHITECS - INTERIOR DESIGNERS - LANDSCAPE
Behind shyadri College, Kesharkunj Building
Architectural and Interior consultant

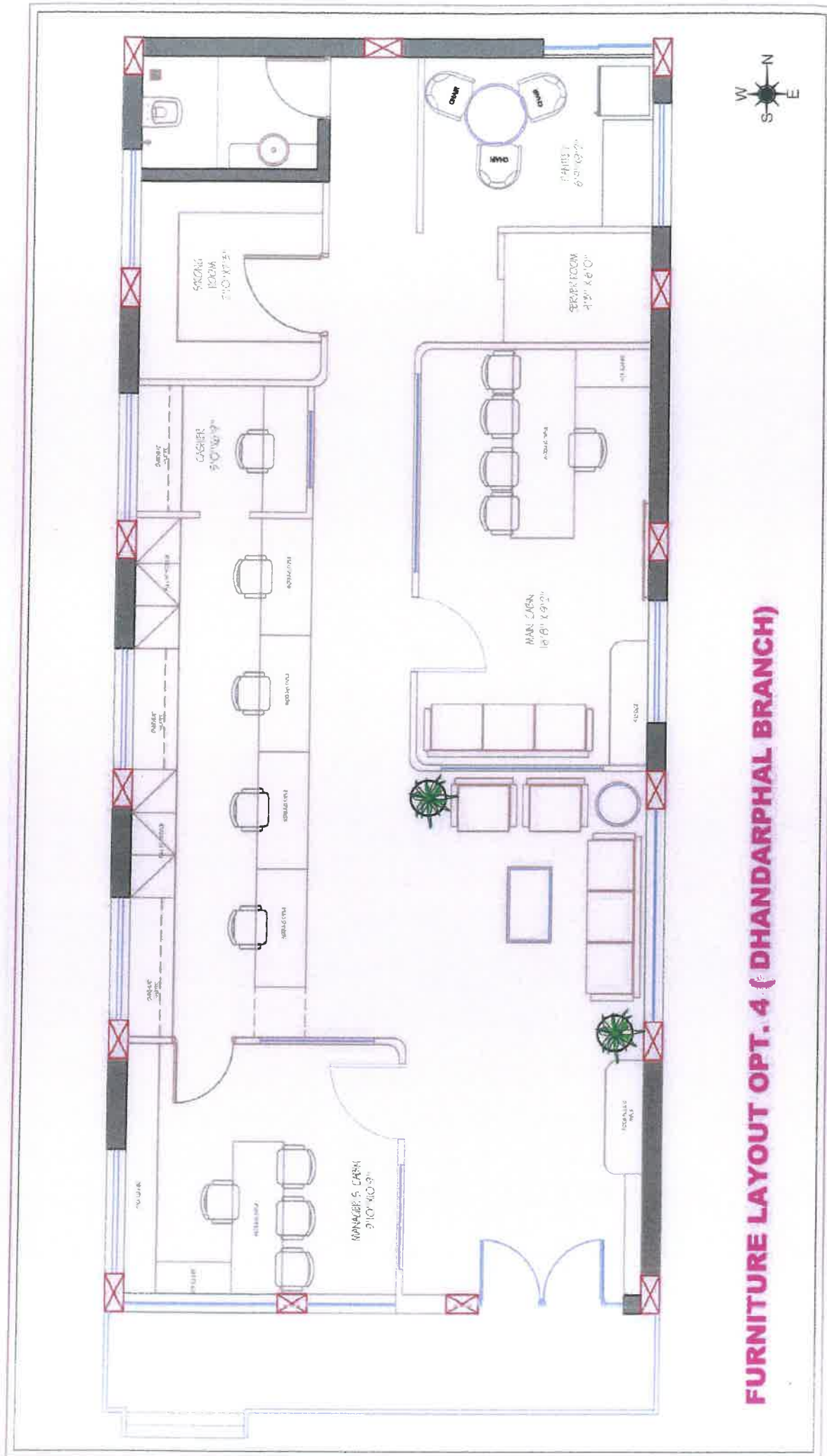
Mo NO - 9975056331

At - Sangamner Dist - Ahmednagar

**Estimate of Proposed Interior Design work at Amrutvahini Bank, Dhandarfal Branch, Tal. Sangamner, Dist. Ahilyanagar
CHAIRS [C]**

Sr. No.	Description	Quantity	Unit	Rate	Total
1	STAFF CHAIR - SYSTEM MECHANISM:- Knee Tilt PNEUMATIC GAS LIFT:- high pressure class 3 BASE: - Hard Chrome; ARMS:-nylon SEAT/BACK:- seat cushioned & back four way stretchable mesh.	5	NOS	6,750.00	33,750.00
2	CABIN MAIN CHAIR - SYSTEM MECHANISM:- Knee Tilt PNEUMATIC GAS LIFT:- High Pressure Class 3 BASE:- Hard Chrome; ARMS:- nylon SEAT/BACK:-seat Cushioned & back mesh	3	NOS	20,250.00	60,750.00
3	CABIN VISITOR CHAIR - WITH ARMS SEAT/BACK: - seat-airmesh cushion/ back fourway stretchable mesh. FRAME:HARDCROME FRAME HANDLE:- NYLON ; MOLDED ARMREST.	6	NOS	6,750.00	40,500.00
4	WAITING 3 SEATER CHAIRS - S.S. Finish Three Seater with first and last armsrest, powder coated seat and back, hard chrome arm rest, legs & side border, with nylon padded adjustable bottom shoe & with heavy duty CMC welded centre bar. All Fixtures & Fittings in hardening alinbolts Dimensions - 69"Length x 24"Width	4	NOS	11,500.00	46,000.00
5	SOFA:- WITH ARMS SEAT/BACK: - seat-airmesh cushion/ back fourway stretchable mesh. FRAME:HARDCROME FRAME HANDLE:- NYLON ; MOLDED ARMREST.	3	NOS	36,666.67	1,10,000.01
TOTAL					2,91,000.01
SAY					2,91,000.01

PLAN



FURNITURE LAYOUT OPT. 4 (DHANDARPHAL BRANCH)

MAIN CABIN











CABIN 02





STAFF & WAITING AREA











